



X-SPR PRO

THE TRUE RACING HELMET

レーシング サービス



SHOEI.COM

FIM HOMOLOGATION



2206



X-SPR Pro



**Tested on the track by the world's fastest riders,
the X-SPR Pro is a true racing machine.**

**Every detail has been carefully designed, tested and tuned
to create this uncompromising masterpiece.**



Marc Márquez
MotoGP
World Champion

Alex Márquez
Moto3, Moto2
World Champion

X-SPR Pro
The True
Racing Helmet



THE TRUE RACING HELMET

The X-Spirit3 has taken international racing by storm, competing successfully in MotoGP, the world's premier road racing championship.

Its outstanding performance, especially in terms of aerodynamics, allows riders, to focus more on the road. The X-Spirit3 has contributed to a number of victories by the world's best riders, including the MotoGP world champion Marc Marquez.

SHOEI is relentless in its pursuit of excellence, which has led to the development of the all-new X-SPR Pro.

The design of the X-SPR Pro is fully focused on racing. Its design conveys an impression of thrilling atmosphere. The completely new aerodynamic design ensures stabilising airflow even at speeds of over 350 km/h.

The innovative performance of the X-SPR Pro is not limited to its exceptional aerodynamic performance. The new dimensions of the visor ensure an extended vertical field of vision, which is of elementary importance in riding situations with extreme lean angles.

Designed to give its rider a competitive edge, the X-SPR Pro is set to revolutionise the world of racing once again.

BORN FROM RACING



350





MADE FOR MOTOGP SPEED

-6% Drag
-2% Lift

1

*compared to the
previous model
X-SPIRIT3*



The helmet's aerodynamic performance and features are designed to allow the rider to keep their full attention on the track, even at the highest speeds.

The shape of the helmet shell of the X-SPR Pro was developed from scratch with this goal in mind. Its aerodynamic performance was improved compared to the previous model through an intensive revision of all details, more than 150 shape changes were made as a result during wind tunnel testing.

SHOEI's superior technology in helmet shell moulding makes it possible to significantly narrow the lower part of the helmet from the chin area to the rear. Together with the newly designed rear stabiliser and the spoiler wings on the sides, this shaping creates a stabilising effect gentle on the neck muscles.

The newly developed rear stabiliser takes the air in the tunnels at the top left and right, channels it through them and exhausts it at the back of the rear wing. The result is an aerodynamically more balanced helmet shape (patent pending).

In addition, pronounced air-guiding edges on the left and right of the top of the head, combined with the concave top of the stabiliser, provide even better aerodynamics. This area shapes the design of the X-SPR Pro and makes it look stylish and safe in a balanced way.

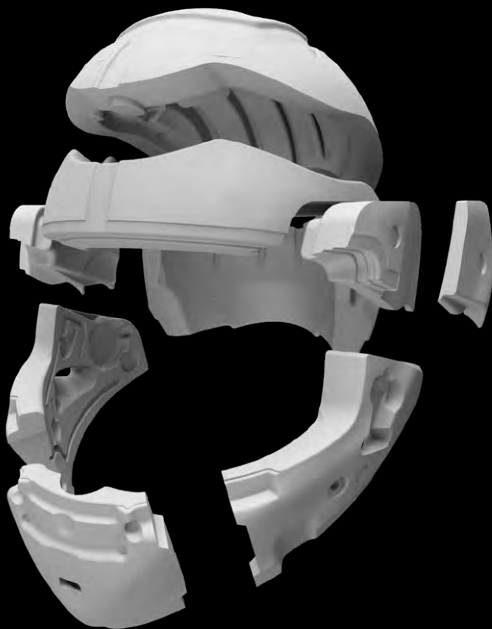
2

*Racing-focused styling.
Stabilizer with integrated
spoiler wings for controlled
airflow and enhanced
directional stability.*

X-SPR

SHOEI

THE TRUE RACING HELMET



MULTI-PART LINER

Impact absorption is provided by a multi-part inner liner consisting of polystyrene elements of different densities. In case of a crash, it absorbs the impact energy that was previously distributed over a large area by the high-strength but also flexible outer shell.

Air channels integrated into the EPS liner enable a highly effective supply of fresh, cool air to the rider. Simultaneously, they exhaust warm, used air and moisture from the inside of the helmet.

OPTIMIZED VENTILATION

The positioning of the ventilation inlets is optimised for the highly forward-leaning position of riders in racing use.

A near doubling of the number of ventilation openings of the cheek pad ventilation system already used in the predecessor model ensures cooling and effective moisture management in the lower area of the helmet. A noticeable gain in comfort during extreme or prolonged use, such as long-distance races.

With three air inlets in the chin area (1), four air inlets in the forehead area (2) and six air outlets in the area of the rear stabiliser (3+4), the ventilation system of the X-SPR Pro is even more efficient than that of the previous model.





WITH **CHEEK VENT
SYSTEM**

Driving direction



X-SPR Pro

X-Spirit 3

5

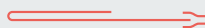
Cooling of the helmet interior after 120
seconds at a wind speed of 100km/h



1

INDIVIDUAL MODULAR PADDING

NEW **POCKET
SYSTEM**



Modular padding
with individual
fitting options



HYDRATION

The inside of the chin bar is prepared for the installation of a hydration system. The optional feed tube, in conjunction with a common mouthpiece such as the CAMELBAK® Big Bite Valve, enables fluid intake to maintain concentration in hot temperatures or during endurance races.

The center pad modules (1) of the X-SPR PRO offer extensive adjustment options for the fitting of the helmet.

Each of the pad modules has a pocket on the back. With removable (2) or optionally available insertable pads (3), the length, width or height of the helmet's fit can be adapted to individual needs.

For ultimate fit, highest stability and reliable protection.

The variable attachment of the cheek pads allows the angle of the helmet on the head to be changed, in order to extend the vertical field of vision.

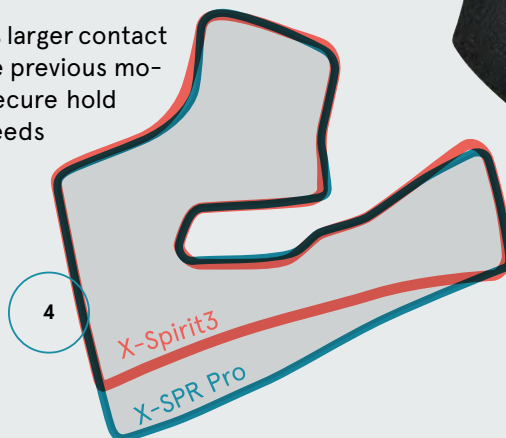
The cheek pads with a 16.5% larger contact surface (4) compared to the previous model ensure an even more secure hold of the helmet, even at speeds of more than 350km/h.



Pad core with removable layer for looser fit



Set with adjustment pads to be inserted into the center pad modules, for a tighter fit



High-speed stability by cheek pads with +16% increased contact area

E.Q.R.S

For gentle helmet removal in the case of an accident, the X-SPR PRO is equipped with the Emergency Quick Release System.

Red, easy-to-reach loops allow first aiders to remove the cheek pads with little effort and then remove the helmet from the victim's head more easily.





HELMET SHELL

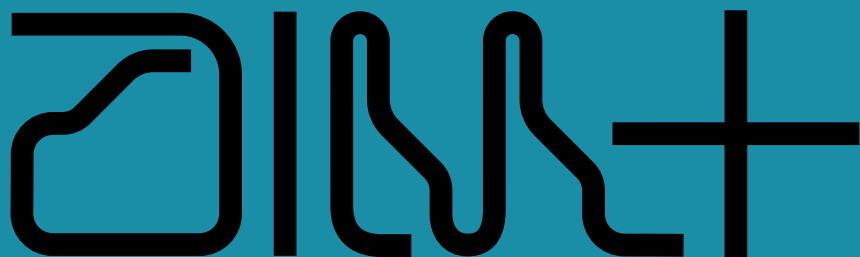
The outer shell of the X-SPR PRO is made of the proven multi-composite material AIM+ and resists even the hardest impacts with its light weight.

The impact energy generated in a collision is absorbed by the multi-part EPS liner of the X-SPR PRO.

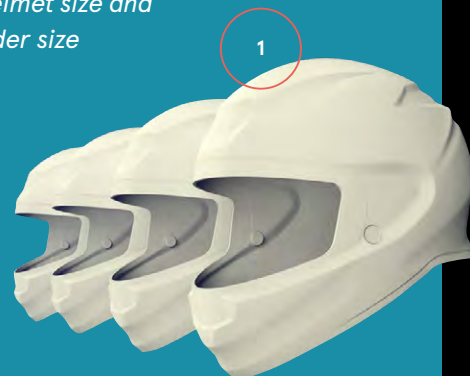
The helmet meets the requirements of the latest homologation standard for motorbike helmets ECE-R 22.06 as well as the requirements of the FIM homologation.

SHOEI's outstanding skills in helmet shell moulding allow the design of a filigree, complex outer shell that combines lightness and stability, attractiveness and safety in an incomparable way.

FIM HOMOLOGATION



4 helmet shell sizes
(XS-S | M | L | XL-XXL) for an
optimal relationship between
helmet size and
rider size





COLORS AND GRAPHICS



– White



– Matt Black



– Black

X-STAR

SHOEI

THE TRUE RACING HELMET



THE CURRENT
GRAPHICS OF
THE SEASON AT
WWW.SHOEI-EUROPE.COM



CWR-F2R VISOR

The newly designed and two-dimensionally shaped visor CWR-F2R (1) offers a larger field of vision and thus ideal viewing conditions on a racing motorbike at extreme lean angles.

The combined pins of the PINLOCK® visor also provide the fastening knob for the tear-off films and are now located significantly further back and thus outside the field of vision. The knob can be rotated eccentrically and ensures optimum tensioning of the tear-off films.

In addition, the visor, with its high-quality optics, has also become 5 mm larger vertically. The result is an unrestricted view when using the PINLOCK® visor. Not only racers appreciate this promising and safety-relevant feature.

The visor mechanism of the X-SPR PRO is also equipped with a newly developed release lock mechanism (2). By activating this function, the release lever on the base plate is blocked, thus minimising the risk of the visor coming loose in the event of a crash.

An additional safety slide (3) prevents the visor from the visor from opening in the event of an impact.



1

Two-dimensionally shaped visor with central locking mechanism and additional safety slide

4

Vortex generators for higher aerodynamic performance and less noise pollution





2

CWR-F2



Clear
CWR-F2
Art.-Nr. 17 39 000 1
CWR-F2R (Racing)
Art.-Nr. 17 40 000 1



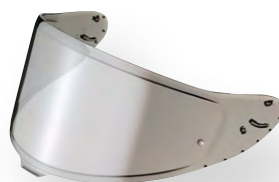
Light Smoke
CWR-F2
Art.-Nr. 17 39 002 1
CWR-F2R (Racing)
Art.-Nr. 17 40 002 1



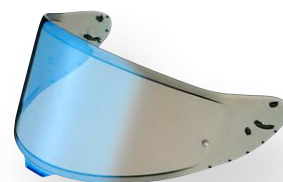
Dark Smoke*
CWR-F2
Art.-Nr. 17 39 003 1
CWR-F2R (Racing)
Art.-Nr. 17 40 003 1



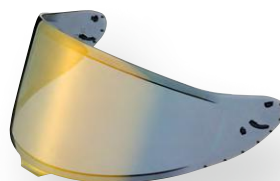
HD Yellow*
CWR-F2
Art.-Nr. 17 39 011 1
CWR-F2R (Racing)
Art.-Nr. 17 40 011 1



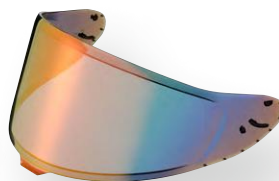
Spectra Silver*
CWR-F2
Art.-Nr. 17 39 004 1



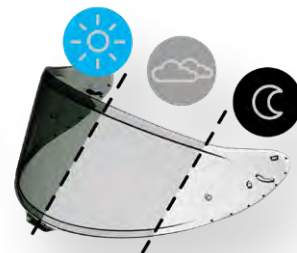
Spectra Blue*
CWR-F2
Art.-Nr. 17 39 005 1



Spectra Gold*
CWR-F2
Art.-Nr. 17 39 006 1



Spectra Rainbow*
CWR-F2
Art.-Nr. 17 39 010 1



Photochromic*
CWR-F2
Art.-Nr. 17 39 012 1

Pinlock® EVO
CWR-F2
Art.-Nr. 17 39 100 0



Dynamically adapts
to changing light
conditions

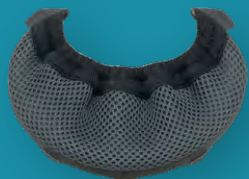


THE TRUE RACING HELMET

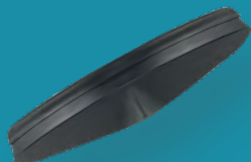
* Does not comply with the current ECE 22.06 homologation regulation

SPARE PARTS & ACCESSORIES

PADS



Chin-Curtain*
Art.-Nr. 19 02 016 0



Chin Spoiler
Art.-Nr. 19 02 021 0



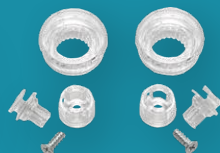
Breath Guard
Art.-Nr. 19 01 004 0



Air Mask 6
Art.-Nr. 19 03 019 0



**Tear-offs CWR-F2R
(Set / 5 pieces)**
Art.-Nr. 19 03 016 0



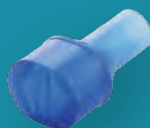
**Button Set CWR-F2R
for Tear-offs**
Art.-Nr. 19 03 017 0



Hydration Tube
Art.-Nr. 19 03 018 0



On/Off-Valve
Art.-Nr. 19 03 020 0



Big Bite Mouthpiece
Art.-Nr. 19 03 021 0



Protective Cap
Art.-Nr. 19 03 022 0



Helmet bag
Art.-Nr. 19 04 005 0



Racing Bag
Art.-Nr. 19 04 008 0



Helmet Repair Ring
Art.-Nr. 19 03 012 0



Centerpad set

XS-S: Art.-Nr. 18 03 539 0
M: Art.-Nr. 18 03 540 0
L: Art.-Nr. 18 03 541 0
XL: Art.-Nr. 18 03 542 0
XXL: Art.-Nr. 18 03 543 0



Cheekpads

31 mm: Art.-Nr. 18 03 535 0
 35 mm: Art.-Nr. 18 03 536 0
 39 mm: Art.-Nr. 18 03 537 0
 43 mm: Art.-Nr. 18 03 538 0



Centerpad sides

F5 mm: Art.-Nr. 18 03 544 0
 F9 mm: Art.-Nr. 18 03 545 0



Centerpad rear

S5 mm: Art.-Nr. 18 03 548 0
 S9 mm: Art.-Nr. 18 03 549 0
 M5 mm: Art.-Nr. 18 03 550 0
 M9 mm: Art.-Nr. 18 03 551 0
 L5 mm: Art.-Nr. 18 03 552 0
 L9 mm: Art.-Nr. 18 03 553 0
 XL5 mm: Art.-Nr. 18 03 554 0
 XL9 mm: Art.-Nr. 18 03 555 0



Centerpad front

F5 mm: Art.-Nr. 18 03 546 0
 F9 mm: Art.-Nr. 18 03 547 0



Neckpad

S9 mm: Art.-Nr. 18 03 556 0
 S13 mm: Art.-Nr. 18 03 557 0
 M9 mm: Art.-Nr. 18 03 558 0
 M13 mm: Art.-Nr. 18 03 559 0
 L9 mm: Art.-Nr. 18 03 560 0
 L13 mm: Art.-Nr. 18 03 561 0
 XL9 mm: Art.-Nr. 18 03 562 0
 XL13 mm: Art.-Nr. 18 03 563 0



Chin strap cover

Art.-Nr. 18 03 564 0



Ear pads

Art.-Nr. 18 03 398 0

INDIVIDUAL ADJUSTMENT



Adjustment pads „Full Set Soft“

Helmet size XS/S: Art.-Nr. 18 03 566 0
 Helmet size M: Art.-Nr. 18 03 568 0
 Helmet size L: Art.-Nr. 18 03 570 0
 Helmet size XL/XXL: Art.-Nr. 18 03 572 0



Adjustment pads „Full Set Hard“

Helmet size XS/S: Art.-Nr. 18 03 565 0
 Helmet size M: Art.-Nr. 18 03 567 0
 Helmet size L: Art.-Nr. 18 03 569 0
 Helmet size XL/XXL: Art.-Nr. 18 03 571 0



Comfort layer for cheekpads (2 mm)

Hard: Art.-Nr. 18 03 573 0
 Soft: Art.-Nr. 18 03 574 0



SHOEI Distribution GmbH
Elisabeth-Selbert Str. 13
D-40764 Langenfeld
Germany
T +49 (0)21 73/ 399 75-0

www.shoei-europe.com

Disclaimer: Due to the reproduction process color as well as graphic deviations are possible. As a result of such deviations all warranties against SHOEL are expressly excluded.

Status: January 2023

Details on scope of delivery, technical data, construction, configuration, material and appearance refer to the time of the press date of the leaflet and are therefore without obligations. Mistakes and changes expected.

All rights reserved. This publication is copyrighted. The associated rights from the copyright, in particular those of translation, reproduction, extraction of illustrations, radio transmissions, transmission in a photo-mechanical or similar manner, and storage in data processing systems, remain reserved. Reproduction and other infringements of rights are only permitted by a previous written consent of the author.

Content: SHOEI Distribution GmbH, Langenfeld

You can find more information and a list of distributors under: www.shoei-europe.com

The logo for X-SPR Pro, featuring the text "X-SPR" in a large, bold, italicized sans-serif font, with "Pro" in a smaller, italicized sans-serif font below it, all in black.